

**system**<sub>lift</sub>  
**advanced solutions**

**FOR ELEVATOR & ESCALATOR**





---

## ABOUT US

### A 100% ITALIAN SUCCESS STORY

Since the foundation in Milan in 2003, we have become a leading company in prewired control systems in the North of Italy and in Europe, succeeding in supplying the demand of lift companies all over the world that were looking for a reliable, safe and comfortable product to buy, install and use for extended periods of times.

---

## OUR ABILITY

We create highly customized solutions, to never compromise about the quality of our products and to maintain year after year the Italian Quality&Design in each component integrated in the control systems, both hardware and software.





---

## OUR MISSION

We launched a wide array of innovative devices designed and manufactured to meet the client's necessities and expectations, through a continuous process of Research&Development and thanks to the better technologies available on the market.

---

# OUR GUARANTEES



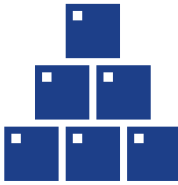
**Product customization**

**Easy Installation**



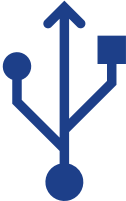
**Remote management**

**Wide choice of Products**



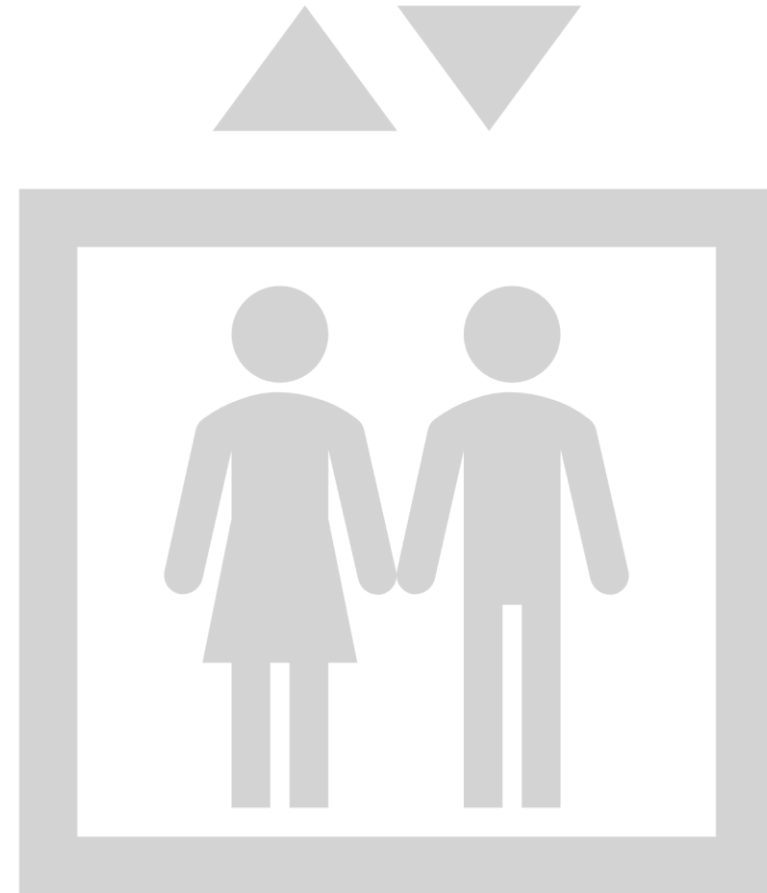
**Support**

**Know-How & Technology**



---

**ELEVATOR**



**PRODUCTS AND CARDS FOR ELEVATOR**

<i><b>TYPES OF ELEVATOR</b></i>	<i><b>CARDS</b></i>		
	<b>COMPACT+</b>	<b>EASY-MAX</b>	<b>EASY-TRONIC</b>
<b>TRACTION LIFTS (2 SPEED / VVVF)</b>	✓	✓	✓
<b>MRL LIFTS</b>		✓	✓
<b>HYDRAULIC LIFTS</b>	✓	✓	✓
<b>PLATFORM LIFTS</b>	✓	✓	

---

# COMPACT+



## ADVANTAGE:

- **Size**
- **Use**
- **Price**
- **Production Time**
- **The Most Advanced**



## QUALITIES:

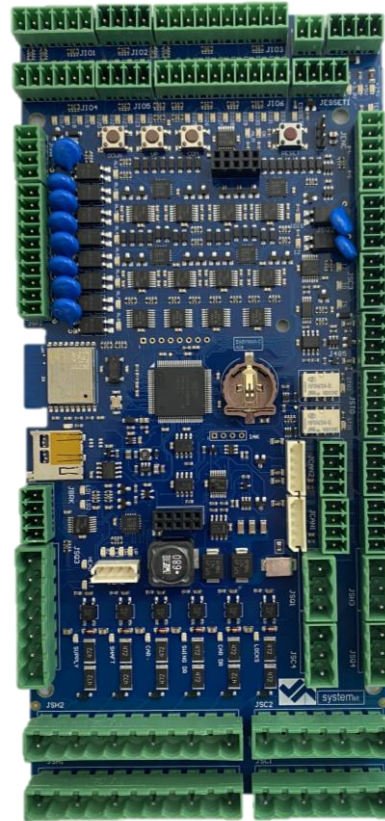
- **Digital System**
- **Parallel Transmission**
- **Excellent For Modernization & Refurbishment**

*Suited to Hydraulic LIFTS EN81.2, Electric Lifts EN81.1 & Reduced Overhead/Pit solutions EN81.21.*



---

# EASY-MAX



## **ADVANTAGE:**

- **Installation**
- **Launching**
- **Managing**
- **Price**



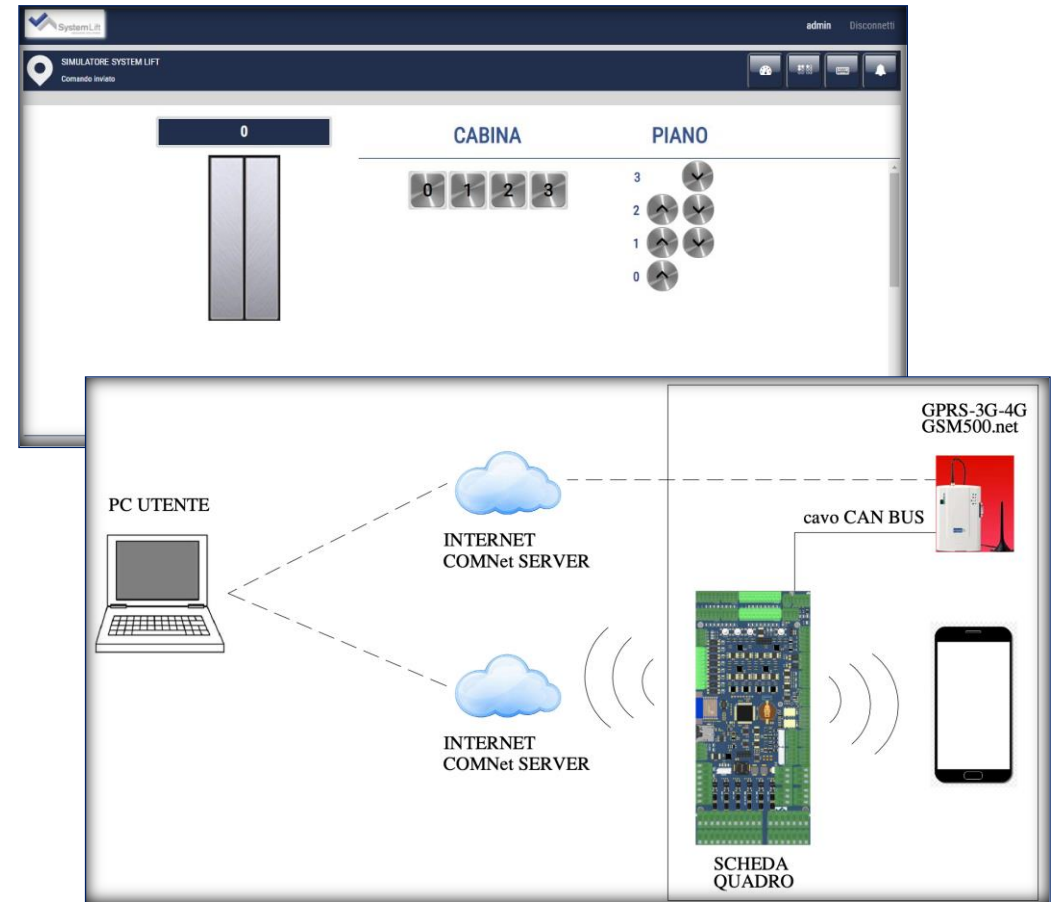
## **QUALITIES:**

- **Serial system CANbus**
- **Based on three types of cards**
- **Configurable Inputs and Outputs**
- **WIFI keypad through EASY-PAD:  
3 card control modes**

# EASY-LINK 4.0 SYSTEM (ON CARDS EASY-MAX)

## 3 EASY-MAX card control modes:

1. *mode MONITORING*
2. *mode STATION*
3. *mode ACCESS POINT*



---

# EASY-TRONIC



- i** **ADVANTAGE**
- **Installation**
  - **Handle**
  - **Start**
  - **Price**

- i** **QUALITIES**
- **Modular System**
  - **Innovative and reliable microprocessor**
  - **10 Drive types**
  - **Lift speed up to 4 m/s**
  - **Safety & Evacuation operation**
  - **Automatic Door Control**
  - **Programmable Inputs and Output**
  - **Plug & play**
  - **REAL TIME**
  - **Built-in Control panel (option)**
  - **Fully in Compliance with EU regulations**

# INTEGRATED EASY-TRONIC



- Flexible controller location
- Traditional sizes available

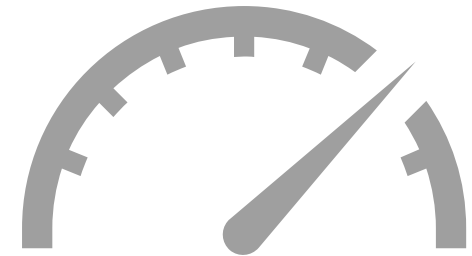


PARTICOLARE QUADRO AL PIANO 3  
SCALA 1:10



---

# ACCESSIBILITY, PERFORMANCE & SAFETY PRODUCTS



---

## SAFETY AND ACCESSIBILITY



- Automatic emergency evacuation
- Fire services
- Firefighter Elevator (EN81-72)
- Non-service to specific floors
- Water detector
- Accessibility for passengers with disabilities



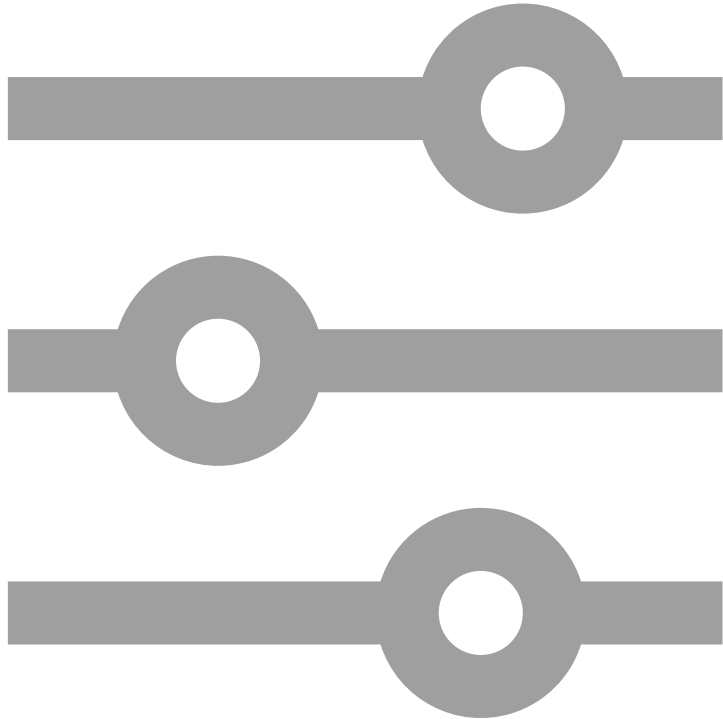
## PERFORMANCE

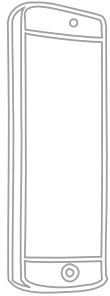


- Multi-language voice signalization
- Automatic smart cabin selection
- Automatic speed regulation
- Door sensor fault self-diagnosis
- Automatic door speed control
- Remote monitoring and diagnostics
- Main Floor Parking
- Continuity of service guarantee
- Exclusive call cabin
- Lunchtime Service
- Pre-opening doors

---

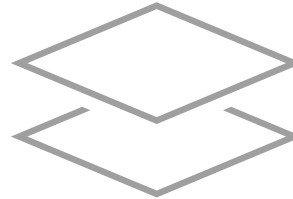
# EXTRA OPTIONS





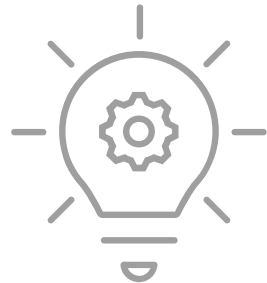
### **CALL MANAGEMENT**

- Modalità Vip
- Cabin Code
- Visitor operation
- Deleting call



### **DESIGN**

- Mechanical or Touch sensitive panel
- Panel with membrane (Anti-Covid)
- Large choice of badges readers



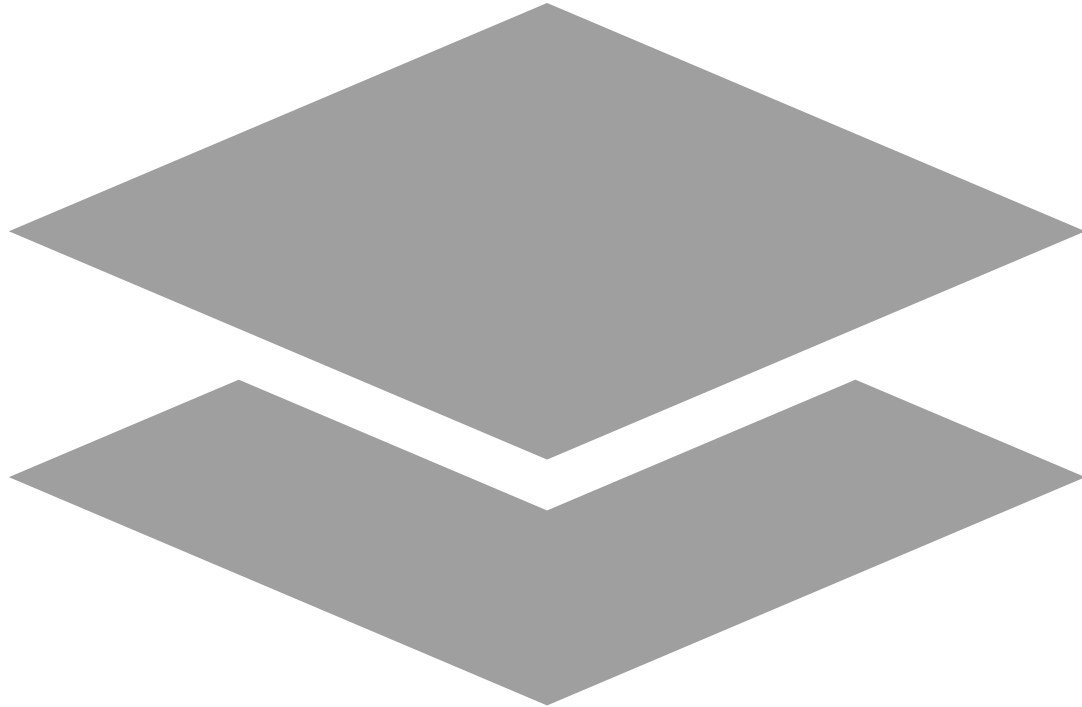
### **ENERGY SAVING OPTIONS**

- Floor lighting control
- Automatic car fan shut off
- Efficient lighting – LED Options
- Regenerative converter



---

# ITALIAN DESIGN











**ESCALATOR**

---

## PRODUCTS AND CARDS FOR ESCALATOR

*Full KIT*

*Modernisation KIT*

EASY-ESCALATOR

KIT-SAFETY

---

# EASY-ESCALATOR



## ADVANTAGE

- **Automatization**
- **Performance**
- **Certificated**
- **Price**



## QUALITIES

- **Securiy module Safety-Icon**
- **Competitive, simple configuration and certified**
- **Automated adjustments and testing protocol**
- **EASY PAD digital keypad for quick and easy execution**
- **Complete system of precablation**
- **Serial communication system between frame and peripherals based on PROFINET protocol**

---

# SAFETY-KIT



## ADVANTAGE

- **Commpact**
- **Certified**
- **Compatible**
- **Price**



## QUALITIES

- **Securiy module Safety-Icon**
- **Complete system of precablation**
- **Compatible with any type of escalator and movable carpets**
- **Warranty: Simplicity, Automation, Competitiveness**



---

# SOME OF OUR CUSTOMERS



---

**THANK YOU FOR THE ATTENTION!!  
FOLLOW US IN THE FUTURE VIA  
SOCIAL**



Via Fratelli Cervi int. 42/44  
20023 Cantalupo di Cerro Maggiore (MI)  
Telefono: +39 02.33514895  
Email: [info@system-lift.it](mailto:info@system-lift.it)  
P.IVA 04868290968

